



TLCPA/RS&H

*Terminal Building Assessment
Site Investigation*

3.22.2022



TOLEDO | LUCAS COUNTY
PORT AUTHORITY

Airport Master Plan Update
Terminal Building Assessment

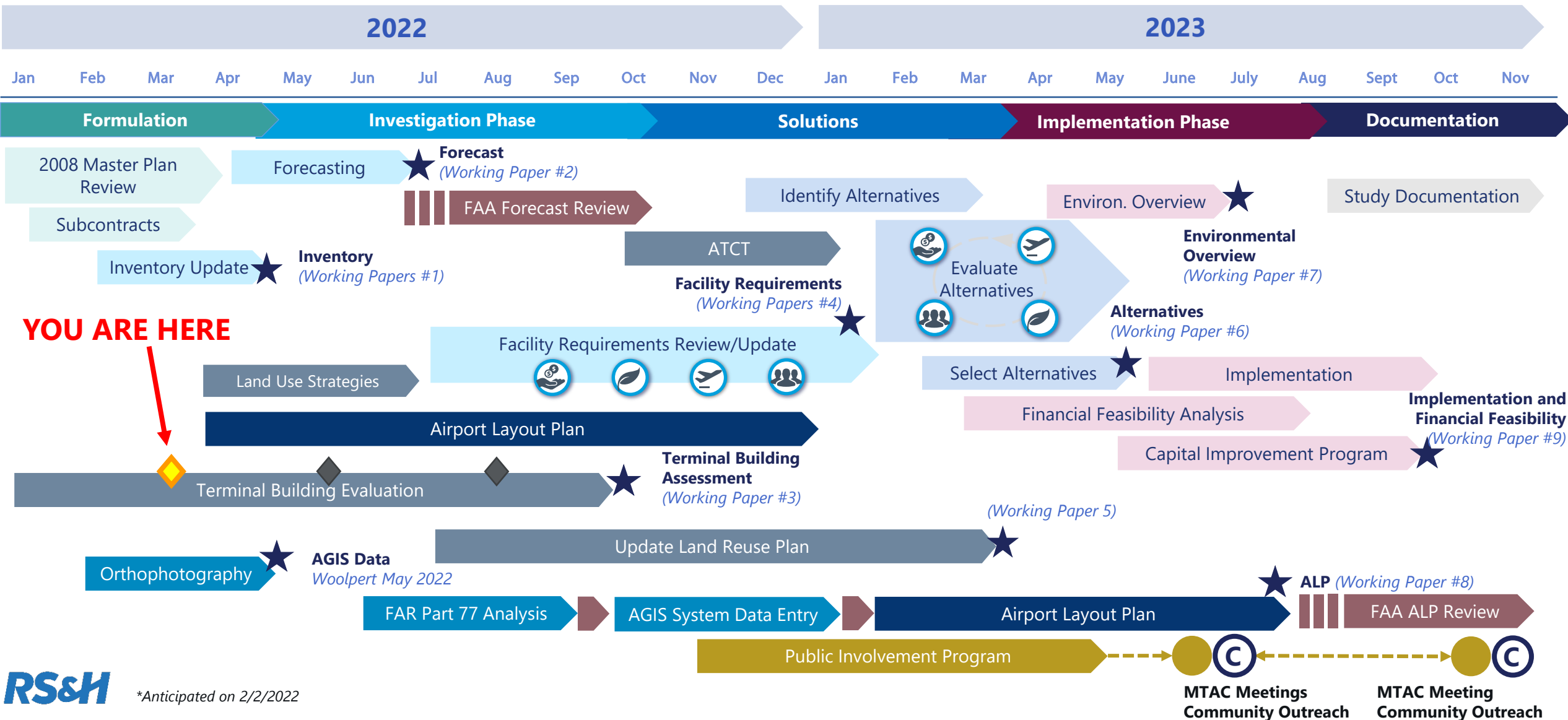


TOLEDO | LUCAS COUNTY
PORT AUTHORITY

RS&H



Schedule*



Terminal Building Assessment

What is it?

- » 1st step in Terminal Development
- » Seeks to Assess:
 - Condition of Facility Infrastructure
 - Meets current/future needs
 - Thinking about tomorrow: *Sustainability*
- » Design Disciplines
 - Mechanical, Electrical, IT, Architectural
 - Planning connects the dots



Terminal Building Planning Assessment



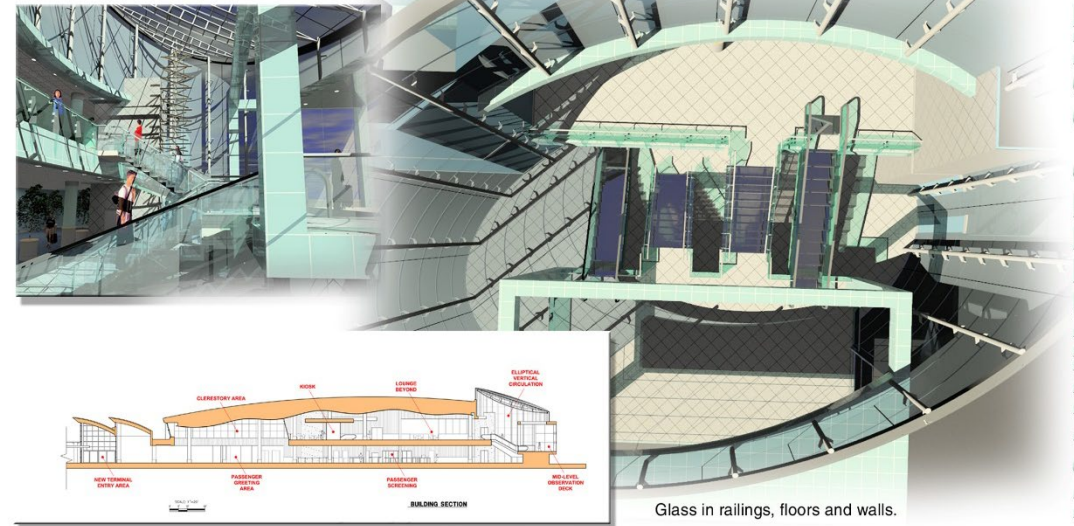
» Milestones

- Site Visit/Investigation
 - *Completed by April 24*
- Tasks 3.2.1 – 3.2.9.1: Programmatic Requirements
 - *Completed by May 31*
- Tasks 3.2.10 – 3.2.11: Alternatives
 - *Completed by August 25*
- Task 3.2.12 and 3.2.13: Preferred Building Solution
 - *Completed before October 27*

TOL Terminal through the years

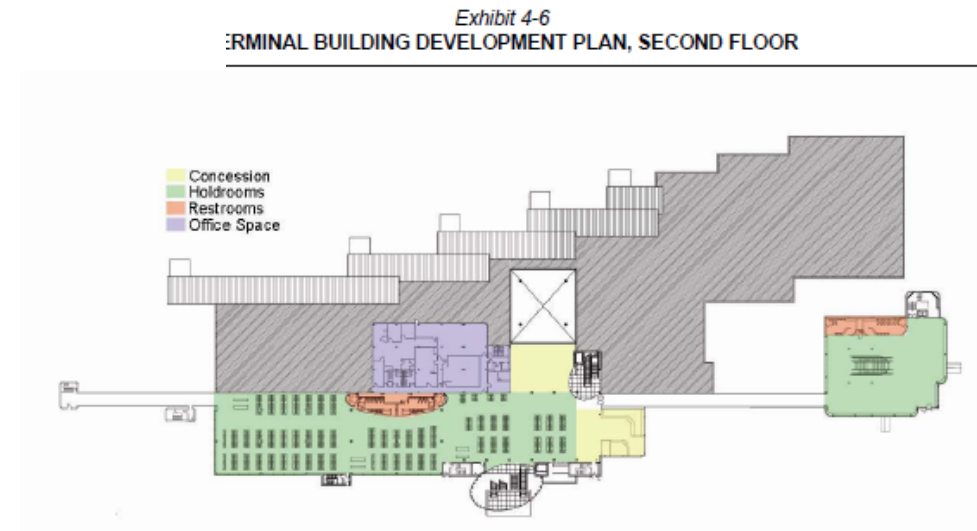
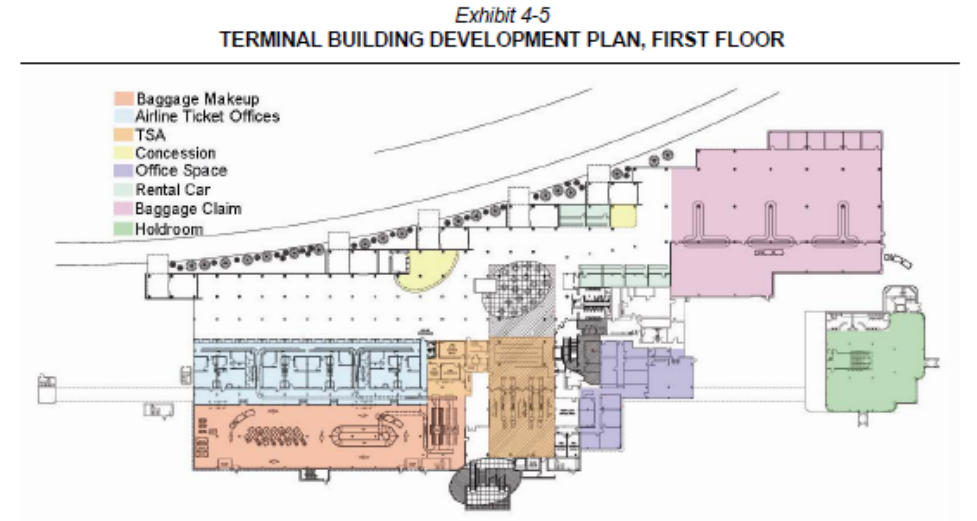
- 1 Phase of Potential 3 Phase Renovation and Expansion Completed
- Doorway to Toledo and Northwest Ohio

Toledo Express Airport
Toledo, Ohio



Known Needs

- » Aging Infrastructure and Passenger Experience
 - The terminal building has sufficient aggregate space to accommodate the forecast demand. However, allocation of space is not adequate to meet future needs.
 - Aging infrastructure and the passenger experience could be enhanced by providing additional amenities to improve comfort, interest, and convenience.



Objectives

- » Assess the current facility and infrastructure
 - Mechanical
 - Electrical
 - Information Technology
 - Architectural
- » Identify deficiencies
- » Evaluate conditions for Working Paper #1

Meet the Team

» Planning

- Michael Becker
- Joshua Lemeshow
- Russell Boroski

» Architecture

- Mark Wilcer
- Sandra Mendez
- Andrew Nelson

» Mechanical

- Jamal Belahmira
- Richard Schafe

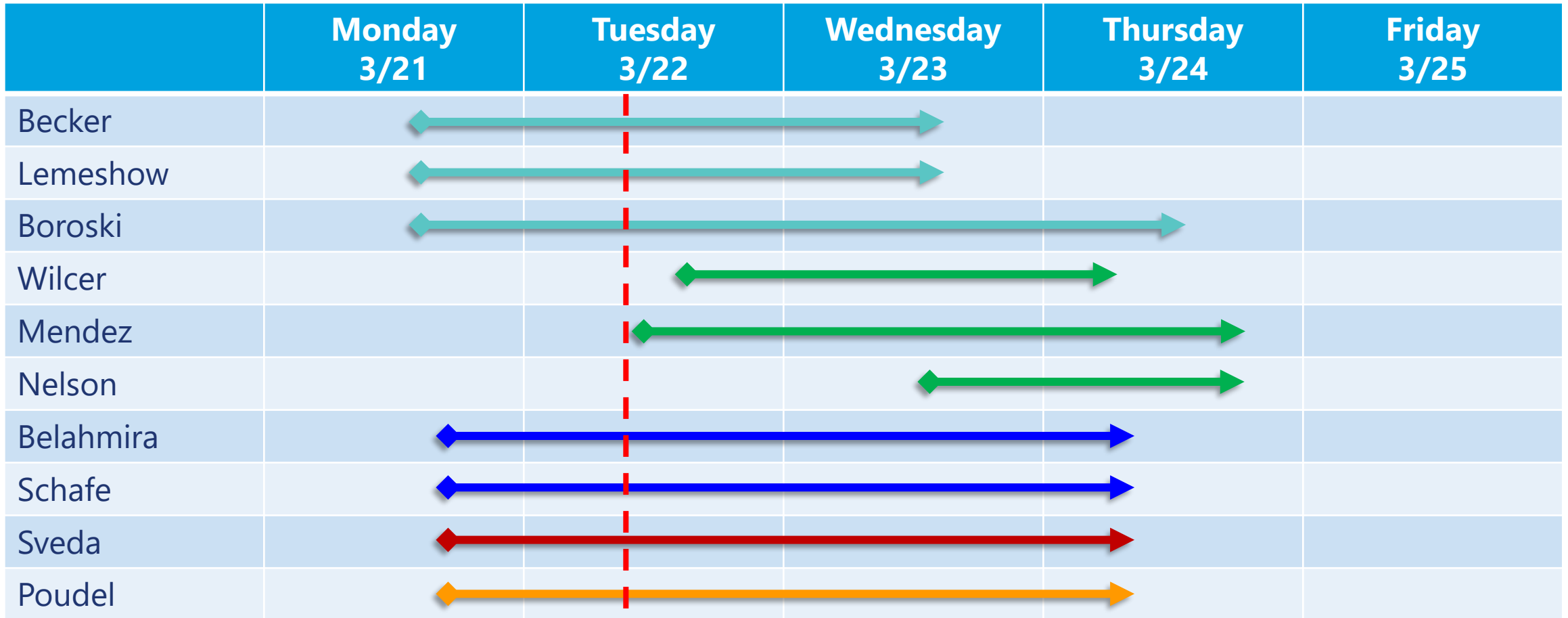
» Electrical

- Steven Sveda

» Technology

- Anil Poudel

Team Stay Durations



Meeting

Site Visit

- » Tuesday (3/22)
 - Mechanical, Electrical, IT Investigation
 - Start at 9:00, break for lunch at 12:00-1:00, until finished
 - *Need TOL escorting/access*
 - *MB/RB to meet Thomas, Dawn, Joe, etc. (11:00)*

- » Wednesday (3/23)
 - Follow-up (as needed) Mechanical, Electrical, IT Investigation
 - Architectural review in afternoon (closed access locations first)
 - Start at 9:00, break for lunch at 12:00-1:00, until finished
 - *Need TOL escorting/access*

- » Thursday (3/24)
 - Follow-up (as needed) Architectural review
 - *RS&H can handle personnel escort*

Questions?

RS&H

